



MODERN MOUNTAIN LEISURE & LUXURY

This 2,444 square foot home has an impressive entry tower with a welcoming covered entry and foyer. Inside you'll find the highly desirable 3 bedroom, 3 bathroom and 3 stall garage. Also featuring 12' ceilings and expansive windows for a bright and airy feel to the open concept great room and dining room. The well-appointed gourmet kitchen features a large center island with breakfast bar for informal dining, ample counter and cabinet space, and a roomy walk-in pantry. The private master suite features a generous walk-in closet plus master bath with dual-sink vanity, glass-enclosed shower, and private water closet. The en-suite junior master features a tiled shower and walk-in closet and is adjacent to a convenient laundry room. Additional highlights include a 3rd bedroom with a dramatic ceiling and a covered patio.

FEATURES

- 12' Ceilings
- 4' Wide Linear Fireplace
- Standing Seam Metal Roof
- Pella Window Package
- 8' Solid Core Interior Doors
- Spray Foam Insulation
- 10 Year Warranty
- Delta/Kohler Fixtures
- Granite/Quartz Countertops
- Wolf/Sub-Zero Appliance Package

Content provided herein is for the convenience to developer/builder's customers. Developer/Builder does not warrant or represent the accuracy or completeness of the information, text, graphics, links and other items contained in this content and reserves the right to change it without notice. This does not constitute an offer or solicitation.

RIMCOUNTRYREALESTATE.COM

Dave Pitz
REALTOR

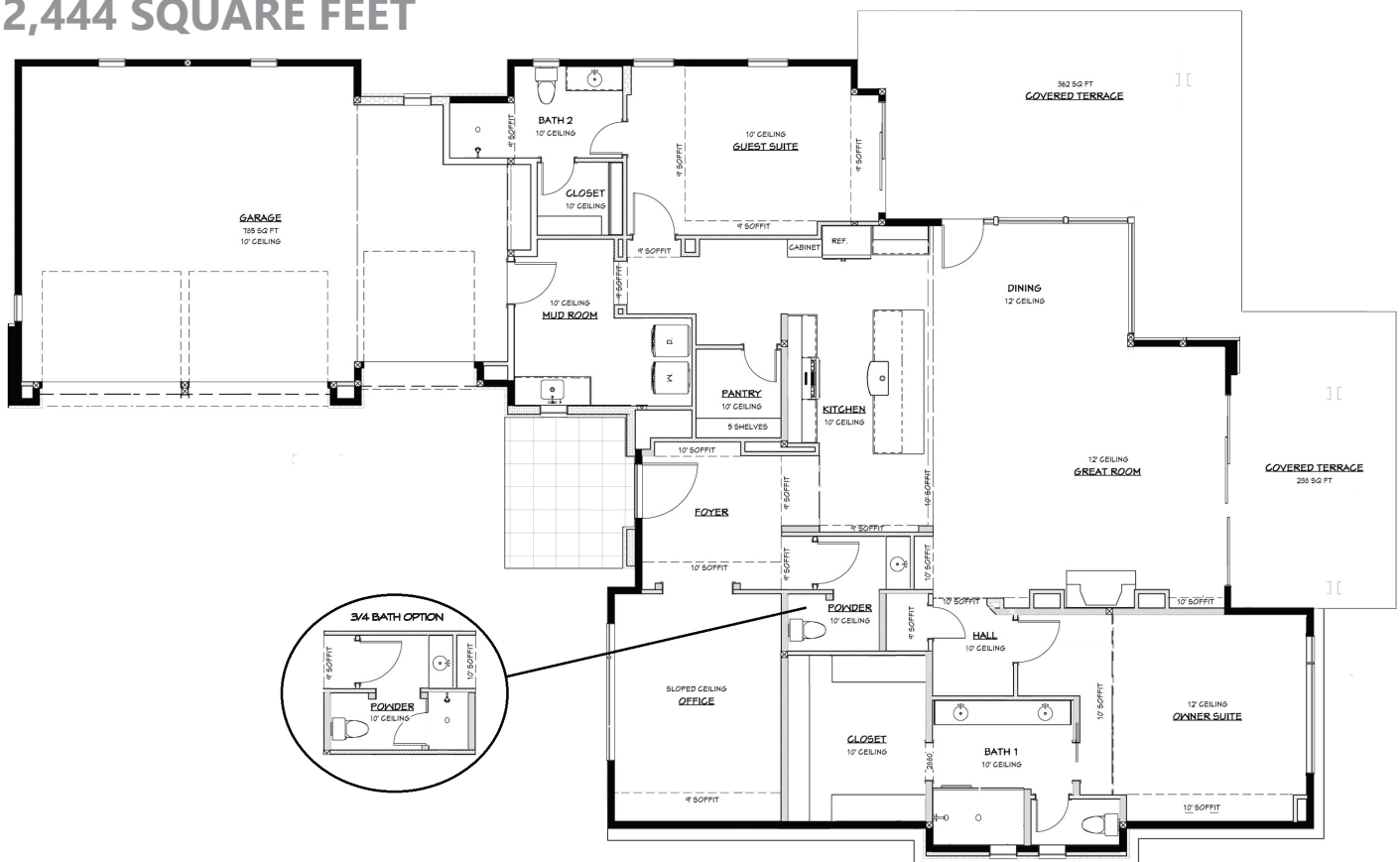
(928) 482-6650

DaveP@Integra-Teams.com



GOLF VILLA 2444

2,444 SQUARE FEET



Architecturally Designed By:
James Group Architects, LLC.



2 BEDROOM + DEN/OFFICE
3 BATHROOMS / 3 STALL GARAGE

BATHROOM



KITCHEN



GREAT ROOM



INTEGRA RIM COUNTRY REAL ESTATE
2101 E. Rim Club Drive
Payson, AZ 85541
(888) 4-TheRim (888.484.3746)
RimCountryRealEstate.com