



PRICES STARTING AT
\$894,606

MODERN MOUNTAIN LEISURE & LUXURY

This 2,415 square foot home welcomes guests with a towering covered entry and foyer. Inside, you'll find 12' ceilings and expansive windows for a bright and airy feel to the open concept great room and dining room. The well-appointed gourmet kitchen features a large center island with a breakfast bar for informal dining, ample counter and cabinet space, and a spacious walk-in pantry. The private master suite features a generous walk-in closet with a dual-sink vanity, glass-enclosed shower and private water closet. Conveniently adjacent to the laundry room, the en-suite junior master features a tiled shower and walk-in closet. Additional highlights include a vaulted private study, 3 stall garage and covered patio with 495 square feet of outdoor living space.

FEATURES

- 12' Ceilings
- 4' Wide Linear Fireplace
- Standing Seam Metal Roof
- Pella Window Package
- 8' Solid Core Interior Doors
- Spray Foam Insulation
- 10 Year Warranty
- Delta/Kohler Fixtures
- Granite/Quartz Countertops
- Wolf/Sub-Zero Appliance Package

Content provided herein is for the convenience to developer/builder's customers. Developer/Builder does not warrant or represent the accuracy or completeness of the information, text, graphics, links, and other items contained in this content and reserves the right to change it without notice. This does not constitute an offer or solicitation.

RIMCOUNTRYREALESTATE.COM

Dave Pitz
REALTOR

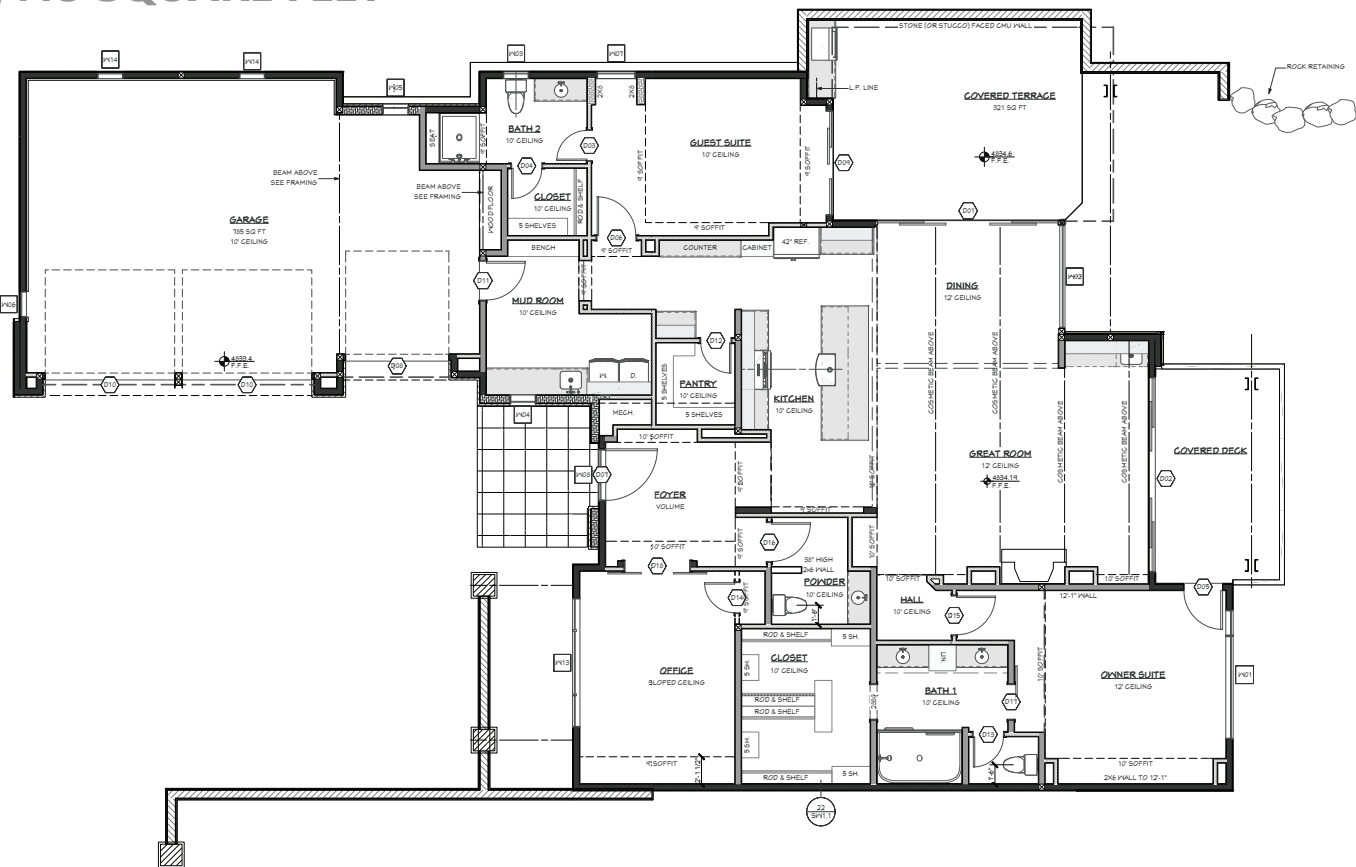
(928) 482-6650

DaveP@Integra-Teams.com



GOLF VILLA 2415

2,415 SQUARE FEET



Architecturally Designed By:
James Group Architects, LLC.



2 BEDROOM + DEN/OFFICE
3 BATHROOMS / 3 STALL GARAGE

REAR ELEVATION



GREAT ROOM



BATHROOM



INTEGRA RIM COUNTRY REAL ESTATE
2101 E. Rim Club Drive
Payson, AZ 85541
(888) 4-TheRim (888.484.3746)
RimCountryRealEstate.com