



PRICES STARTING AT
\$894,606

MODERN MOUNTAIN LEISURE & LUXURY

This 2,400 square foot home has a uniquely welcoming covered entry and foyer. Inside you'll find an expansive great room featuring 12' ceilings and expansive windows for a bright and airy feel to the well-appointed gourmet kitchen that features a large center island with breakfast bar for informal dining, ample counter and cabinet space, and a uniquely hidden walk-in pantry. The private master suite features access to the covered patio, a generous walk-in closet with dual-sink vanity, glass-enclosed shower, and private water closet. The en-suite junior master features a tiled shower and walk-in closet and is adjacent to a convenient laundry room. Additional highlights include a 3rd bedroom or private study with a walk-in closet.

FEATURES

- 12' Ceilings
- 4' Wide Linear Fireplace
- Standing Seam Metal Roof
- Pella Window Package
- 8' Solid Core Interior Doors
- Spray Foam Insulation
- 10 Year Warranty
- Delta/Kohler Fixtures
- Granite/Quartz Countertops
- Wolf/Sub-Zero Appliance Package

Content provided herein is for the convenience to developer/builder's customers. Developer/Builder does not warrant or represent the accuracy or completeness of the information, text, graphics, links and other items contained in this content and reserves the right to change it without notice. This does not constitute an offer or solicitation.

RIMCOUNTRYREALESTATE.COM

Dave Pitz
REALTOR

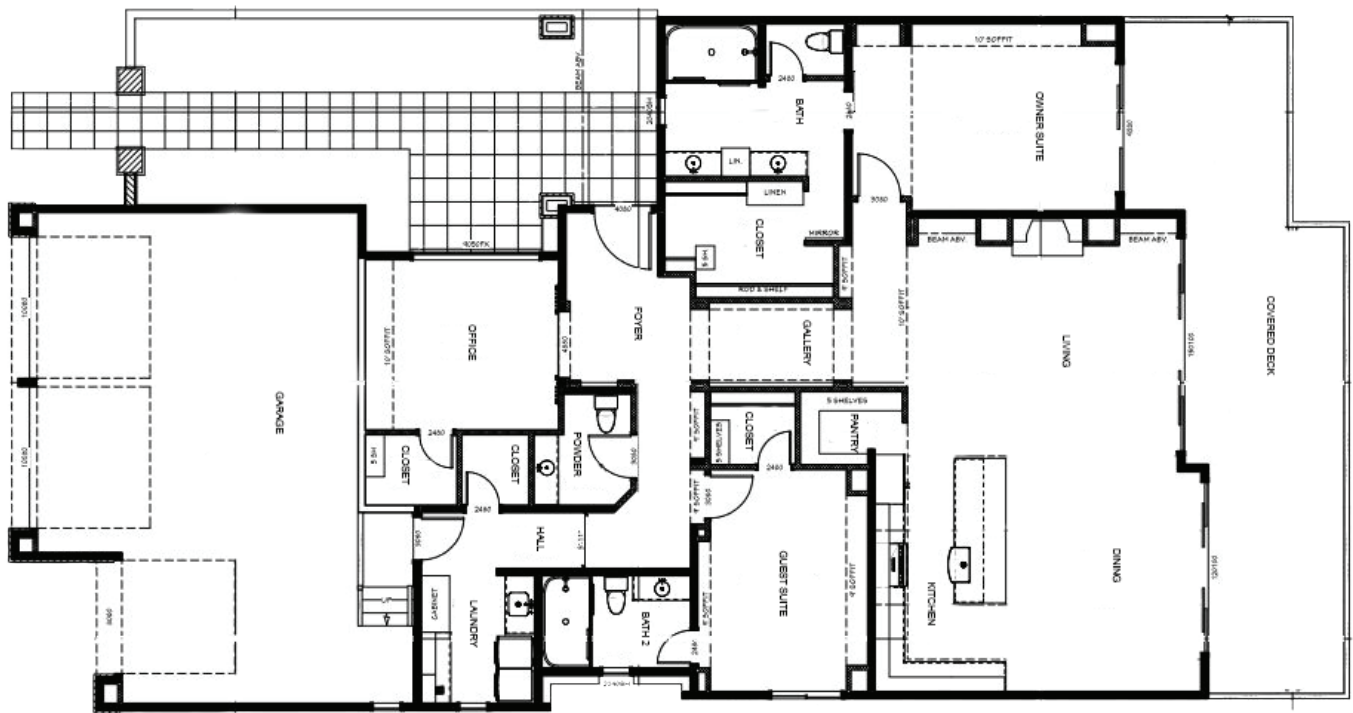
(928) 482-6650

DaveP@Integra-Teams.com



GOLF VILLA 2400

2,400 SQUARE FEET



Architecturally Designed By:
James Group Architects, LLC.



2 BEDROOM + DEN/OFFICE
3 BATHROOMS / 3 STALL GARAGE

GREAT ROOM



BATHROOM



INTEGRA RIM COUNTRY REAL ESTATE
2101 E. Rim Club Drive
Payson, AZ 85541
(888) 4-TheRim (888.484.3746)
RimCountryRealEstate.com